



TOVARA
WEST

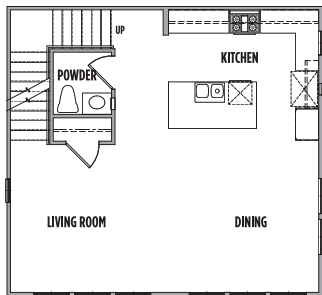
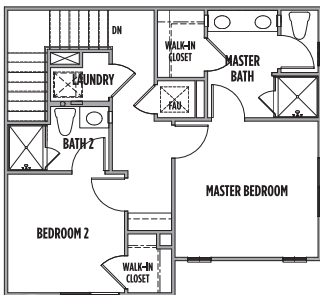
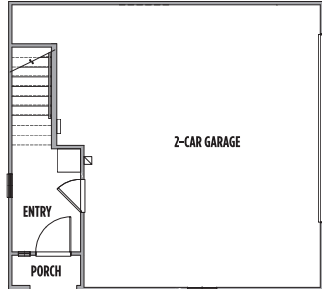
Tovara West offers an exceptional collection of attached homes that offer room to grow, the luxury of modern amenities, plus comfortable spaces to entertain with family and friends.

818.698.4122 • tovarawest@williamshomes.com



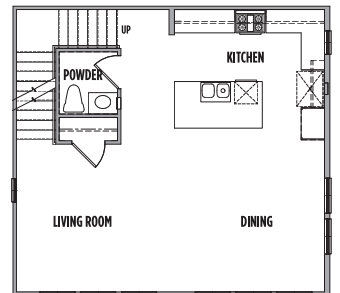
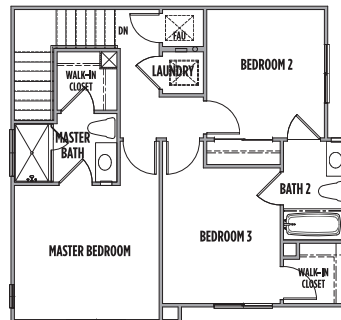
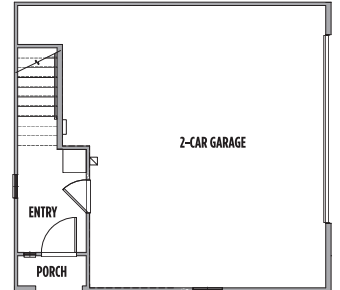
Residence One A

- 1,285 Approx Sq Ft
- 2 Bedrooms
- 2.5 Baths
- Two-Car Garage



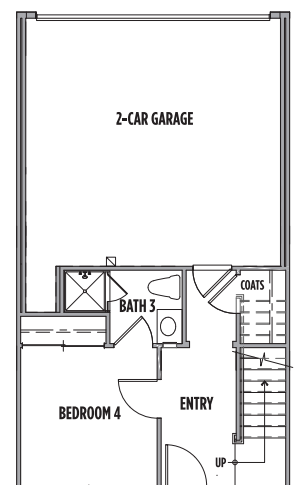
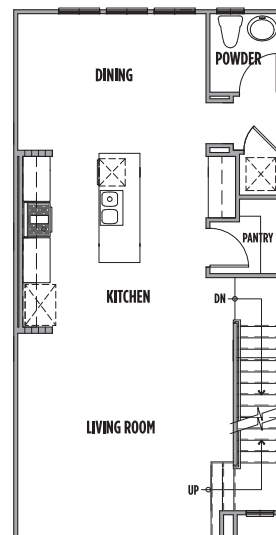
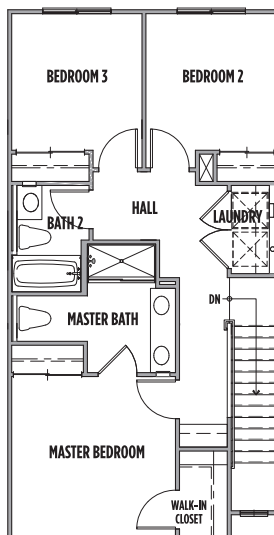
Residence One

- 1,397 Approx Sq Ft
- 3 Bedrooms
- 2.5 Baths
- Two-Car Garage



Residence Two

- 1,714 Approx Sq Ft
- 4 Bedrooms
- 3.5 Baths
- Two-Car Garage

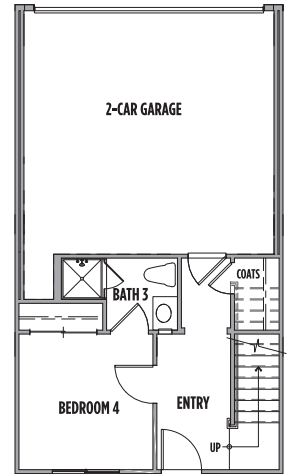
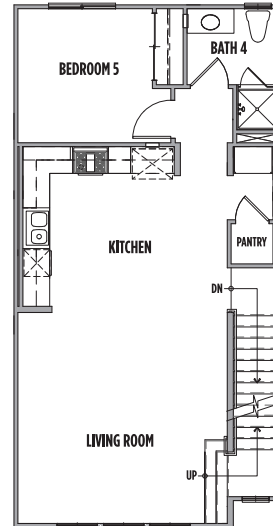
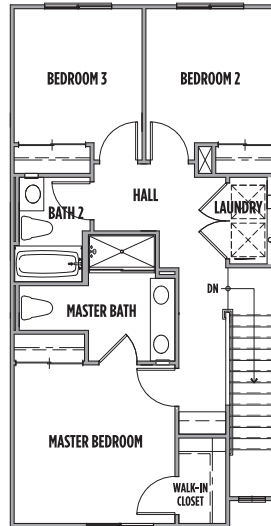


WILLIAMSHOMES.com



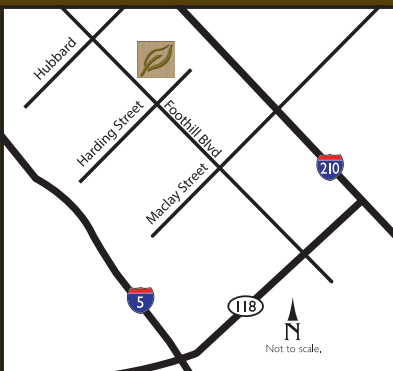
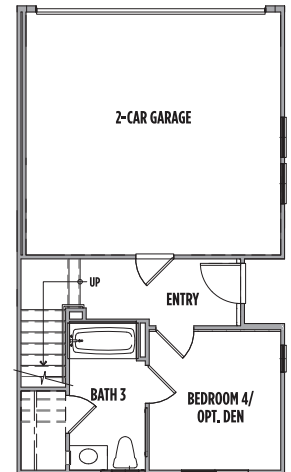
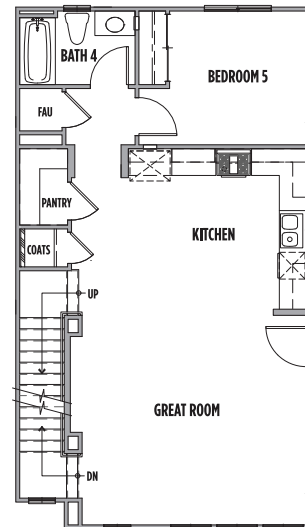
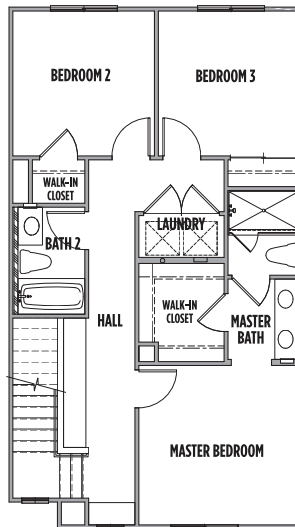
Residence Three

- 1,714 Approx Sq Feet
- 5 Bedrooms
- 4 Baths
- Two-Car Garage



Residence Four

- 1,863 Approx Sq Ft
- 5 Bedrooms
- 4 Baths
- Optional Den
- Two-Car Garage



Neighborhood Park & Tot Lot • Minutes to Local Shops & Services
Easy Access to Major Freeways • NO MELLO-ROOS!

Tovara West
12740 Watt Lane • Sylmar, California
818.698.4122
tovarawest@williamshomes.com

WILLIAMSHOMES
 Building Quality For A Lifetime



In an effort to meet consumer expectations, Tovar West and Williams Homes reserve the right to modify features, specifications and/or prices without prior notice or obligation. All square footages are approximate. Renderings, floorplans and maps are artists' conceptions and not necessarily to scale. Williams Homes, Inc. is a California Broker, License no. 01449126