

**PACIFIC
VILLAS**

Pacific Villas is Baldwin Park's newest gated community featuring two- and three-story homes designed with you in mind. Here, you'll find the home you and your loved ones have been looking for in the location you've been dreaming of.

626.338.0387 • pacificvillas@williamshomes.com

RESIDENCE 1

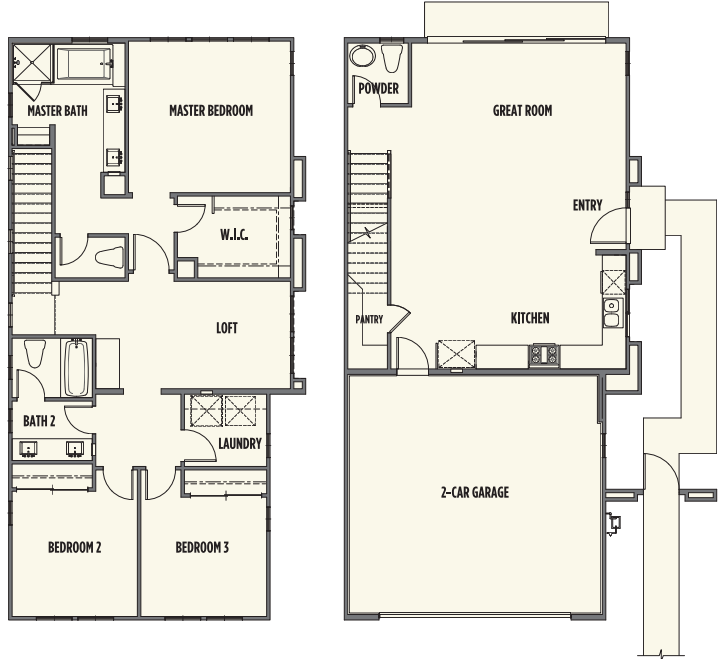
- 1,761 Approx Sq Ft
- 3 Bedrooms
- 2.5 Baths
- Loft
- Two-Car Garage



1A



1B



RESIDENCE 2

- 2,028 Approx Sq Ft
- 4 Bedrooms
- 3.5 Baths
- Two-Car Garage
- Optional Office



2A



2B



RESIDENCE 3

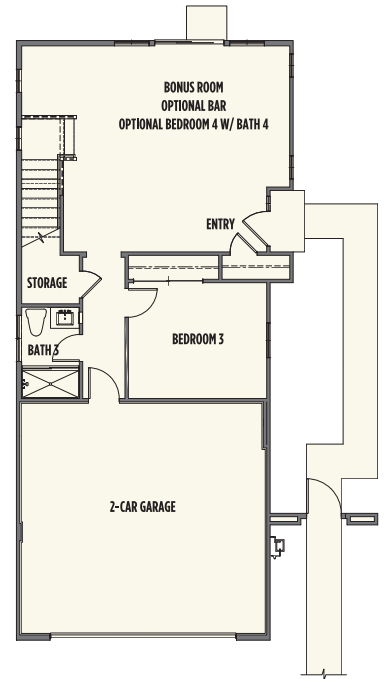
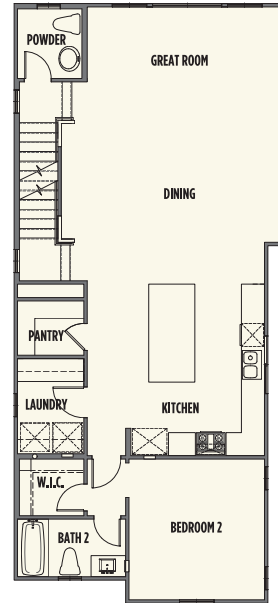
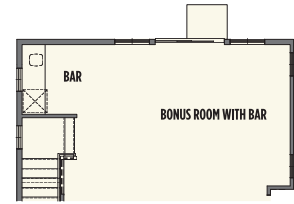
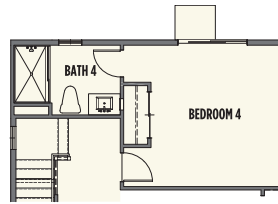
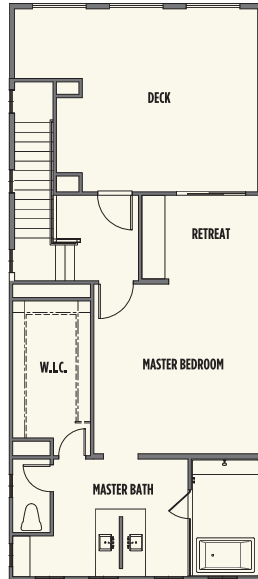
- 2,593 Approx Sq Ft
- 3 Bedrooms
- 3.5 Baths
- Two-Car Garage
- Optional Bedroom 4 and 4 Baths
- Optional Bonus Room with Bar



3A



3B



Gated Entry
Low HOA
No Mello Roos



PACIFIC VILLAS

14833 Pacific Avenue • Baldwin Park
626.338.0387 • pacificvillas@williamshomes.com



In an effort to meet consumer expectations, Pacific Villas and Williams Homes reserve the right to modify features, specifications and/or prices without prior notice or obligation. All square footages are approximate. Renderings, floorplans and maps are artists' conceptions and not necessarily to scale. Williams Homes, Inc. is a California Broker, License no. 01449126